



Fifth Edition

ESSENTIAL CELL BIOLOGY

ALBERTS • HOPKIN • JOHNSON
MORGAN • RAFF • ROBERTS • WALTER

ESSENTIAL
CELL BIOLOGY

FIFTH EDITION





FIFTH
EDITION

ESSENTIAL
CELL BIOLOGY

Bruce Alberts

UNIVERSITY OF CALIFORNIA, SAN FRANCISCO

Karen Hopkin

SCIENCE WRITER

Alexander Johnson

UNIVERSITY OF CALIFORNIA, SAN FRANCISCO

David Morgan

UNIVERSITY OF CALIFORNIA, SAN FRANCISCO

Martin Raff

UNIVERSITY COLLEGE LONDON (EMERITUS)

Keith Roberts

UNIVERSITY OF EAST ANGLIA (EMERITUS)

Peter Walter

UNIVERSITY OF CALIFORNIA, SAN FRANCISCO



W. W. NORTON & COMPANY
NEW YORK • LONDON

W. W. Norton & Company has been independent since its founding in 1923, when William Warder Norton and Mary D. Herter Norton first published lectures delivered at the People's Institute, the adult education division of New York City's Cooper Union. The firm soon expanded its program beyond the Institute, publishing books by celebrated academics from America and abroad. By midcentury, the two major pillars of Norton's publishing program—trade books and college texts—were firmly established. In the 1950s, the Norton family transferred control of the company to its employees, and today—with a staff of four hundred and a comparable number of trade, college, and professional titles published each year—W. W. Norton & Company stands as the largest and oldest publishing house owned wholly by its employees.

Copyright © 2019 by Bruce Alberts, Dennis Bray, Karen Hopkin, Alexander Johnson, the Estate of Julian Lewis, David Morgan, Martin Raff, Nicole Marie Odile Roberts, and Peter Walter

All rights reserved
Printed in Canada

Editors: Betsy Twitchell and Michael Morales
Associate Editor: Katie Callahan
Editorial Consultant: Denise Schanck
Senior Associate Managing Editor, College: Carla L. Talmadge
Editorial Assistants: Taylere Peterson and Danny Vargo
Director of Production, College: Jane Searle
Managing Editor, College: Marian Johnson
Managing Editor, College Digital Media: Kim Yi
Media Editor: Kate Brayton
Associate Media Editor: Gina Forsythe
Media Project Editor: Jesse Newkirk
Media Editorial Assistant: Katie Daloia
Ebook Production Manager: Michael Hicks
Content Development Specialist: Todd Pearson
Marketing Manager, Biology: Stacy Loyal
Director of College Permissions: Megan Schindel
Permissions Clearer: Sheri Gilbert
Composition: Emma Jeffcock of EJ Publishing Services
Illustrations: Nigel Orme
Design Director: Hope Miller Goodell
Designer: Matthew McClements, Blink Studio, Ltd.
Indexer: Bill Johncocks
Manufacturing: Transcontinental Interglobe—Beauceville, Quebec

Permission to use copyrighted material is included alongside the appropriate content.

Library of Congress Cataloging-in-Publication Data

Names: Alberts, Bruce, author.
Title: Essential cell biology / Bruce Alberts, Karen Hopkin, Alexander Johnson, David Morgan, Martin Raff, Keith Roberts, Peter Walter.
Description: Fifth edition. | New York : W.W. Norton & Company, [2019] | Includes index.
Identifiers: LCCN 2018036121 | **ISBN 9780393679533 (hardcover)**
Subjects: LCSH: Cytology. | Molecular biology. | Biochemistry.
Classification: LCC QH581.2 .E78 2019 | DDC 571.6—dc23 LC record available at <https://lcn.loc.gov/2018036121>

W. W. Norton & Company, Inc., 500 Fifth Avenue, New York, NY 10110
wnorton.com
W. W. Norton & Company Ltd., 15 Carlisle Street, London W1D 3BS

PREFACE

Nobel Prize–winning physicist Richard Feynman once noted that nature has a far, far better imagination than our own. Few things in the universe illustrate this observation better than the cell. A tiny sac of molecules capable of self-replication, this marvelous structure constitutes the fundamental building block of life. We are made of cells. Cells provide all the nutrients we consume. And the continuous activity of cells makes our planet habitable. To understand ourselves—and the world of which we are a part—we need to know something of the life of cells. Armed with such knowledge, we—as citizens and stewards of the global community—will be better equipped to make well-informed decisions about increasingly sophisticated issues, from climate change and food security to biomedical technologies and emerging epidemics.

In *Essential Cell Biology* we introduce readers to the fundamentals of cell biology. The Fifth Edition introduces powerful new techniques that allow us to examine cells and their components with unprecedented precision—such as super-resolution fluorescence microscopy and cryoelectron microscopy—as well as the latest methods for DNA sequencing and gene editing. We discuss new thinking about how cells organize and encourage the chemical reactions that make life possible, and we review recent insights into human origins and genetics.

With each edition of *Essential Cell Biology*, its authors re-experience the joy of learning something new and surprising about cells. We are also reminded of how much we still don't know. Many of the most fascinating questions in cell biology remain unanswered. How did cells arise on the early Earth, multiplying and diversifying through billions of years of evolution to fill every possible niche—from steaming vents on the ocean floor to frozen mountaintops—and, in doing so, transform our planet's entire environment? How is it possible for billions of cells to seamlessly cooperate and form large, multicellular organisms like ourselves? These are among the many challenges that remain for the next generation of cell biologists, some of whom will begin a wonderful, lifelong journey with this textbook.

Readers interested in learning how scientific inquisitiveness can fuel breakthroughs in our understanding of cell biology will enjoy the stories of discovery presented in each chapter's "How We Know" feature. Packed with experimental data and design, these narratives illustrate how biologists tackle important questions and how experimental results shape future ideas. In this edition, a new "How We Know" recounts the discoveries that first revealed how cells transform the energy locked in food molecules into the forms used to power the metabolic reactions on which life depends.

As in previous editions, the questions in the margins and at the end of each chapter not only test comprehension but also encourage careful thought and the application of newly acquired information to a broader biological context. Some of these questions have more than one valid

answer and others invite speculation. Answers to all of the questions are included at the back of the book, and many provide additional information or an alternative perspective on material presented in the main text.

More than 160 video clips, animations, atomic structures, and high-resolution micrographs complement the book and are available online. The movies are correlated with each chapter and callouts are highlighted in color. This supplemental material, created to clarify complex and critical concepts, highlights the intrinsic beauty of living cells.

For those who wish to probe even more deeply, *Molecular Biology of the Cell*, now in its sixth edition, offers a detailed account of the life of the cell. In addition, *Molecular Biology of the Cell, Sixth Edition: A Problems Approach*, by John Wilson and Tim Hunt, provides a gold mine of thought-provoking questions at all levels of difficulty. We have drawn upon this tour-de-force of experimental reasoning for some of the questions in *Essential Cell Biology*, and we are very grateful to its authors.

Every chapter of *Essential Cell Biology* is the product of a communal effort: both text and figures were revised and refined as drafts circulated from one author to another—many times over and back again! The numerous other individuals who have helped bring this project to fruition are credited in the Acknowledgments that follow. Despite our best efforts, it is inevitable that errors will have crept into the book, and we encourage eagle-eyed readers who find mistakes to let us know, so that we can correct them in the next printing.

Acknowledgments

The authors acknowledge the many contributions of professors and students from around the world in the creation of this Fifth Edition. In particular, we received detailed reviews from the following instructors who had used the fourth edition, and we would like to thank them for their important contributions to our revision:

Delbert Abi Abdallah, Thiel College, Pennsylvania
Ann Aguanno, Marymount Manhattan College
David W. Barnes, Georgia Gwinnett College
Manfred Beilharz, The University of Western Australia
Christopher Brandl, Western University, Ontario
Marion Brodhagen, Western Washington University
David Casso, San Francisco State University
Shazia S. Chaudhry, The University of Manchester, United Kingdom
Ron Dubreuil, The University of Illinois at Chicago
Heidi Engelhardt, University of Waterloo, Canada
Sarah Ennis, University of Southampton, United Kingdom
David Featherstone, The University of Illinois at Chicago
Yen Kang France, Georgia College
Barbara Frank, Idaho State University
Daniel E. Frigo, University of Houston
Marcos Garcia-Ojeda, University of California, Merced
David L. Gard, The University of Utah
Adam Gromley, Lincoln Memorial University, Tennessee
Elly Holthuisen, University Medical Center Utrecht, The Netherlands
Harold Hoops, The State University of New York, Geneseo
Bruce Jensen, University of Jamestown, North Dakota
Andor Kiss, Miami University, Ohio
Annette Koenders, Edith Cowan University, Australia
Arthur W. Lambert, Whitehead Institute for Biomedical Research
Denis Larochelle, Clark University, Massachusetts
David Leaf, Western Washington University
Esther Leise, The University of North Carolina at Greensboro
Bernhard Lieb, University of Mainz, Germany

Julie Lively, Louisiana State University
Caroline Mackintosh, University of Saint Mary, Kansas
John Mason, The University of Edinburgh, Scotland
Craig Milgrim, Grossmont College, California
Arkadeep Mitra, City College, Kolkata, India
Niels Erik Møllegaard, University of Copenhagen
Javier Naval, University of Zaragoza, Spain
Marianna Patrauchan, Oklahoma State University
Amanda Polson-Zeigler, University of South Carolina
George Risinger, Oklahoma City Community College
Laura Romberg, Oberlin College, Ohio
Sandra Schulze, Western Washington University
Isaac Skromne, University of Richmond, Virginia
Anna Slusarz, Stephens College, Missouri
Richard Smith, University of Tennessee Health Science Center
Alison Snape, King's College London
Shannon Stevenson, University of Minnesota Duluth
Marla Tipping, Providence College, Rhode Island
Jim Tokuhisa, Virginia Polytechnic Institute and State University
Guillaume van Eys, Maastricht University, The Netherlands
Barbara Vertel, Rosalind Franklin University of Medicine and Science, Illinois
Jennifer Waby, University of Bradford, United Kingdom
Dianne Watters, Griffith University, Australia
Allison Wiedemeier, University of Louisiana at Monroe
Elizabeth Wurdak, St. John's University, Minnesota
Kwok-Ming Yao, The University of Hong Kong
Foong May Yeong, National University of Singapore

We are also grateful to those readers who alerted us to errors that they found in the previous edition.

Working on this book has been a pleasure, in part due to the many people who contributed to its creation. Nigel Orme again worked closely with author Keith Roberts to generate the entire illustration program with his usual skill and care. He also produced all of the artwork for both cover and chapter openers as a respectful digital tribute to the “squeeze-bottle” paintings of the American artist Alden Mason (1919–2013). As in previous editions, Emma Jeffcock did a brilliant job in laying out the whole book and meticulously incorporated our endless corrections. We owe a special debt to Michael Morales, our editor at Garland Science, who coordinated the whole enterprise. He oversaw the initial reviewing, worked closely with the authors on their chapters, took great care of us at numerous writing meetings, and kept us organized and on schedule. He also orchestrated the wealth of online materials, including all video clips and animations. Our copyeditor, Jo Clayton, ensured that the text was stylistically consistent and error-free. At Garland, we also thank Jasmine Ribeaux, Georgina Lucas, and Adam Sendroff.

For welcoming our book to W. W. Norton and bringing this edition to print, we thank our editor Betsy Twitchell, as well as Roby Harrington, Drake McFeely, Julia Reidhead, and Ann Shin for their support. Taylere Peterson and Danny Vargo deserve thanks for their assistance as the book moved from Garland to Norton and through production. We are grateful to media editor Kate Brayton and content development specialist Todd Pearson, associate editors Gina Forsythe and Katie Callahan, and media editorial assistant Katie Daloia whose coordination of electronic media development has resulted in an unmatched suite of resources for cell biology students and instructors alike. We are grateful for marketing manager Stacy Loyal's tireless enthusiasm and advocacy for our book. Megan Schindel, Ted Szczepanski, and Stacey Stambaugh are all owed thanks for navigating the permissions for this edition. And Jane Searle's able management of production, Carla Talmadge's incredible attention to detail, and their shared knack for troubleshooting made the book you hold in your hands a reality.

Denise Schanck deserves extra special thanks for providing continuity as she helped shepherd this edition from Garland to Norton. As always, she attended all of our writing retreats and displayed great wisdom in orchestrating everything she touched.

Last but not least, we are grateful, yet again, to our colleagues and our families for their unflagging tolerance and support. We give our thanks to everyone in this long list.

Resources for Instructors and Students

INSTRUCTOR RESOURCES

wwnorton.com/instructors

Smartwork5

Smartwork5 is an easy-to-use online assessment tool that helps students become better problem solvers through a variety of interactive question types and extensive answer-specific feedback. All Smartwork5 questions are written specifically for the book, are tagged to Bloom's levels and learning objectives, and many include art and animations. Get started quickly with our premade assignments or take advantage of Smartwork5's flexibility by customizing questions and adding your own content. Integration with your campus LMS saves you time by allowing Smartwork5 grades to report right to your LMS gradebook, while individual and class-wide performance reports help you see students' progress.

Interactive Instructor's Guide

An all-in-one resource for instructors who want to integrate active learning into their course. Searchable by chapter, phrase, topic, or learning objective, the Interactive Instructor's Guide compiles the many valuable teaching resources available with *Essential Cell Biology*. This website includes activities, discussion questions, animations and videos, lecture outlines, learning objectives, primary literature suggestions, medical topics guide, and more.

Coursepacks

Easily add high-quality Norton digital media to your online, hybrid, or lecture course. Norton Coursepacks work within your existing learning management system. Content is customizable and includes chapter-based, multiple-choice reading quizzes, text-based learning objectives, access to the full suite of animations, flashcards, and a glossary.

Test Bank

Written by Linda Huang, University of Massachusetts Boston, and Cheryl D. Vaughan, Harvard University Division of Continuing Education, the revised and expanded Test Bank for *Essential Cell Biology* includes 65–80 questions per chapter. Questions are available in multiple-choice, matching, fill-in-the-blank, and short-answer formats, with many using art from the textbook. All questions are tagged to Bloom's taxonomy level, learning objective, book section, and difficulty level, allowing instructors to easily create meaningful exams. The Test Bank is available in ExamView and as downloadable PDFs from wwnorton.com/instructors.

Animations and Videos

Streaming links give access to more than 130 videos and animations, bringing the concepts of cell biology to life. The movies are correlated with each chapter and callouts are highlighted in color.

Figure-integrated Lecture Outlines

All of the figures are integrated in PowerPoint, along with the section and concept headings from the text, to give instructors a head start creating lectures for their course.

Image Files

Every figure and photograph in the book is available for download in PowerPoint and JPG formats from wwnorton.com/instructors.

STUDENT RESOURCES

digital.wwnorton.com/ecb5

Animations and Videos

Streaming links give access to more than 130 videos and animations, bringing the concepts of cell biology to life. Animations can also be accessed via the ebook and in select Smartwork5 questions. The movies are correlated with each chapter and callouts are highlighted in color.

Student Site

Resources for self-study are available on the student site, including multiple-choice quizzes, cell explorer slides, challenge and concept questions, flashcards, and a glossary.

ABOUT THE AUTHORS

BRUCE ALBERTS received his PhD from Harvard University and is a professor in the Department of Biochemistry and Biophysics at the University of California, San Francisco. He was the editor in chief of *Science* from 2008 to 2013 and served as president of the U.S. National Academy of Sciences from 1993 to 2005.

KAREN HOPKIN received her PhD from the Albert Einstein College of Medicine and is a science writer. Her work has appeared in various scientific publications, including *Science*, *Proceedings of the National Academy of Sciences*, and *The Scientist*, and she is a regular contributor to *Scientific American's* daily podcast, "60-Second Science."

ALEXANDER JOHNSON received his PhD from Harvard University and is a professor in the Department of Microbiology and Immunology at the University of California, San Francisco.

DAVID MORGAN received his PhD from the University of California, San Francisco, where he is a professor in the Department of Physiology and vice dean for research in the School of Medicine.

MARTIN RAFF received his MD from McGill University and is emeritus professor of biology at the Medical Research Council Laboratory for Molecular Cell Biology at University College London.

KEITH ROBERTS received his PhD from the University of Cambridge and was deputy director of the John Innes Centre. He is emeritus professor at the University of East Anglia.

PETER WALTER received his PhD from The Rockefeller University in New York and is a professor in the Department of Biochemistry and Biophysics at the University of California, San Francisco, and an investigator of the Howard Hughes Medical Institute.

LIST OF CHAPTERS and SPECIAL FEATURES

CHAPTER 1 Cells: The Fundamental Units of Life 1

- PANEL 1-1** Microscopy 12
TABLE 1-1 Historical Landmarks in Determining Cell Structure 24
PANEL 1-2 Cell Architecture 25
How We Know: Life's Common Mechanisms 30
TABLE 1-2 Some Model Organisms and Their Genomes 35

CHAPTER 2 Chemical Components of Cells 39

- TABLE 2-1** Length and Strength of Some Chemical Bonds 48
TABLE 2-2 The Chemical Composition of a Bacterial Cell 52
How We Know: The Discovery of Macromolecules 60
PANEL 2-1 Chemical Bonds and Groups 66
PANEL 2-2 The Chemical Properties of Water 68
PANEL 2-3 The Principal Types of Weak Noncovalent Bonds 70
PANEL 2-4 An Outline of Some of the Types of Sugars 72
PANEL 2-5 Fatty Acids and Other Lipids 74
PANEL 2-6 The 20 Amino Acids Found in Proteins 76
PANEL 2-7 A Survey of the Nucleotides 78

CHAPTER 3 Energy, Catalysis, and Biosynthesis 81

- PANEL 3-1** Free Energy and Biological Reactions 94
TABLE 3-1 Relationship Between the Standard Free-Energy Change, ΔG° , and the Equilibrium Constant 96
How We Know: "High-Energy" Phosphate Bonds Power Cell Processes 102
TABLE 3-2 Some Activated Carriers Widely Used in Metabolism 109

CHAPTER 4 Protein Structure and Function 117

- PANEL 4-1** A Few Examples of Some General Protein Functions 118
PANEL 4-2 Making and Using Antibodies 140
TABLE 4-1 Some Common Functional Classes of Enzymes 142
How We Know: Measuring Enzyme Performance 144
TABLE 4-2 Historical Landmarks in Our Understanding of Proteins 160
PANEL 4-3 Cell Breakage and Initial Fractionation of Cell Extracts 164
PANEL 4-4 Protein Separation by Chromatography 166
PANEL 4-5 Protein Separation by Electrophoresis 167
PANEL 4-6 Protein Structure Determination 168

CHAPTER 5 DNA and Chromosomes 173

- How We Know:** Genes Are Made of DNA 193

CHAPTER 6 DNA Replication and Repair 199

How We Know: The Nature of Replication 202

TABLE 6-1 Proteins Involved in DNA Replication 213

TABLE 6-2 Error Rates 218

CHAPTER 7 From DNA to Protein: How Cells Read the Genome 227

TABLE 7-1 Types of RNA Produced in Cells 232

TABLE 7-2 The Three RNA Polymerases in Eukaryotic Cells 235

How We Know: Cracking the Genetic Code 246

TABLE 7-3 Antibiotics That Inhibit Bacterial Protein or RNA Synthesis 256

TABLE 7-4 Biochemical Reactions That Can Be Catalyzed by Ribozymes 261

CHAPTER 8 Control of Gene Expression 267

How We Know: Gene Regulation—The Story of *Eve* 280

CHAPTER 9 How Genes and Genomes Evolve 297

TABLE 9-1 Viruses That Cause Human Disease 318

TABLE 9-2 Some Vital Statistics for the Human Genome 322

How We Know: Counting Genes 324

CHAPTER 10 Analyzing the Structure and Function of Genes 333

How We Know: Sequencing the Human Genome 348

CHAPTER 11 Membrane Structure 365

TABLE 11-1 Some Examples of Plasma Membrane Proteins and Their Functions 375

How We Know: Measuring Membrane Flow 384

CHAPTER 12 Transport Across Cell Membranes 389

TABLE 12-1 A Comparison of Ion Concentrations Inside and Outside a Typical Mammalian Cell 391

TABLE 12-2 Some Examples of Transmembrane Pumps 403

How We Know: Squid Reveal Secrets of Membrane Excitability 412

TABLE 12-3 Some Examples of Ion Channels 419

CHAPTER 13 How Cells Obtain Energy from Food 427

TABLE 13-1 Some Types of Enzymes Involved in Glycolysis 431

PANEL 13-1 Details of the 10 Steps of Glycolysis 436

PANEL 13-2 The Complete Citric Acid Cycle 442

How We Know: Unraveling the Citric Acid Cycle 444

CHAPTER 14 Energy Generation in Mitochondria and Chloroplasts 455

TABLE 14-1 Product Yields from Glucose Oxidation 469

PANEL 14-1 Redox Potentials 472

How We Know: How Chemiosmotic Coupling Drives ATP Synthesis 476

CHAPTER 15 Intracellular Compartments and Protein Transport 495

TABLE 15-1 The Main Functions of Membrane-enclosed Organelles of a Eukaryotic Cell 497

TABLE 15-2 The Relative Volumes and Numbers of the Major Membrane-enclosed Organelles in a Liver Cell (Hepatocyte) 498

TABLE 15-3 Some Typical Signal Sequences 502

TABLE 15-4 Some Types of Coated Vesicles 513

How We Know: Tracking Protein and Vesicle Transport 520

CHAPTER 16 Cell Signaling 533

TABLE 16-1 Some Examples of Signal Molecules 536

TABLE 16-2 Some Foreign Substances That Act on Cell-Surface Receptors 544

TABLE 16-3 Some Cell Responses Mediated by Cyclic AMP 550

TABLE 16-4 Some Cell Responses Mediated by Phospholipase C Activation 552

How We Know: Untangling Cell Signaling Pathways 563

CHAPTER 17 Cytoskeleton 573

TABLE 17-1 Drugs That Affect Microtubules 584

How We Know: Pursuing Microtubule-associated Motor Proteins 588

TABLE 17-2 Drugs That Affect Filaments 594

CHAPTER 18 The Cell-Division Cycle 609

TABLE 18-1 Some Eukaryotic Cell-Cycle Durations 611

How We Know: Discovery of Cyclins and Cdks 615

TABLE 18-2 The Major Cyclins and Cdks of Vertebrates 617

PANEL 18-1 The Principal Stages of M Phase in an Animal Cell 628

CHAPTER 19 Sexual Reproduction and Genetics 651

PANEL 19-1 Some Essentials of Classical Genetics 675

How We Know: Using SNPs to Get a Handle on Human Disease 684

CHAPTER 20 Cell Communities: Tissues, Stem Cells, and Cancer 691

TABLE 20-1 A Variety of Factors Can Contribute to Genetic Instability 721

TABLE 20-2 Examples of Cancer-critical Genes 728

How We Know: Making Sense of the Genes That Are Critical for Cancer 730

CONTENTS

Preface v
About the Authors x

CHAPTER 1

Cells: The Fundamental Units of Life 1

UNITY AND DIVERSITY OF CELLS 2

Cells Vary Enormously in Appearance and Function 2
Living Cells All Have a Similar Basic Chemistry 3
Living Cells Are Self-Replicating Collections of Catalysts 4
All Living Cells Have Apparently Evolved from the Same Ancestral Cell 5
Genes Provide Instructions for the Form, Function, and Behavior of Cells and Organisms 6

CELLS UNDER THE MICROSCOPE 6

The Invention of the Light Microscope Led to the Discovery of Cells 7
Light Microscopes Reveal Some of a Cell's Components 8
The Fine Structure of a Cell Is Revealed by Electron Microscopy 9

THE PROKARYOTIC CELL 11

Prokaryotes Are the Most Diverse and Numerous Cells on Earth 14
The World of Prokaryotes Is Divided into Two Domains: Bacteria and Archaea 15

THE EUKARYOTIC CELL 16

The Nucleus Is the Information Store of the Cell 16
Mitochondria Generate Usable Energy from Food Molecules 17
Chloroplasts Capture Energy from Sunlight 18
Internal Membranes Create Intracellular Compartments with Different Functions 19
The Cytosol Is a Concentrated Aqueous Gel of Large and Small Molecules 21
The Cytoskeleton Is Responsible for Directed Cell Movements 22
The Cytosol Is Far from Static 23
Eukaryotic Cells May Have Originated as Predators 24

MODEL ORGANISMS 27

Molecular Biologists Have Focused on *E. coli* 27
Brewer's Yeast Is a Simple Eukaryote 28
Arabidopsis Has Been Chosen as a Model Plant 28
Model Animals Include Flies, Worms, Fish, and Mice 29
Biologists Also Directly Study Humans and Their Cells 32
Comparing Genome Sequences Reveals Life's Common Heritage 33
Genomes Contain More Than Just Genes 35

ESSENTIAL CONCEPTS 36

QUESTIONS 37





CHAPTER 2

Chemical Components of Cells 39

CHEMICAL BONDS 40

- Cells Are Made of Relatively Few Types of Atoms 40
- The Outermost Electrons Determine How Atoms Interact 41
- Covalent Bonds Form by the Sharing of Electrons 43
- Some Covalent Bonds Involve More Than One Electron Pair 44
- Electrons in Covalent Bonds Are Often Shared Unequally 45
- Covalent Bonds Are Strong Enough to Survive the Conditions Inside Cells 45
- Ionic Bonds Form by the Gain and Loss of Electrons 46
- Hydrogen Bonds Are Important Noncovalent Bonds for Many Biological Molecules 47
- Four Types of Weak Interactions Help Bring Molecules Together in Cells 47
- Some Polar Molecules Form Acids and Bases in Water 49

SMALL MOLECULES IN CELLS 50

- A Cell Is Formed from Carbon Compounds 50
- Cells Contain Four Major Families of Small Organic Molecules 51
- Sugars Are both Energy Sources and Subunits of Polysaccharides 52
- Fatty Acid Chains Are Components of Cell Membranes 54
- Amino Acids Are the Subunits of Proteins 56
- Nucleotides Are the Subunits of DNA and RNA 56

MACROMOLECULES IN CELLS 58

- Each Macromolecule Contains a Specific Sequence of Subunits 59
- Noncovalent Bonds Specify the Precise Shape of a Macromolecule 62
- Noncovalent Bonds Allow a Macromolecule to Bind Other Selected Molecules 62

ESSENTIAL CONCEPTS 64

QUESTIONS 65



CHAPTER 3

Energy, Catalysis, and Biosynthesis 81

THE USE OF ENERGY BY CELLS 82

- Biological Order Is Made Possible by the Release of Heat Energy from Cells 83
- Cells Can Convert Energy from One Form to Another 84
- Photosynthetic Organisms Use Sunlight to Synthesize Organic Molecules 85
- Cells Obtain Energy by the Oxidation of Organic Molecules 86
- Oxidation and Reduction Involve Electron Transfers 87

FREE ENERGY AND CATALYSIS 88

- Chemical Reactions Proceed in the Direction That Causes a Loss of Free Energy 89
- Enzymes Reduce the Energy Needed to Initiate Spontaneous Reactions 89
- The Free-Energy Change for a Reaction Determines Whether It Can Occur 90
- ΔG Changes as a Reaction Proceeds Toward Equilibrium 92
- The Standard Free-Energy Change, ΔG° , Makes It Possible to Compare the Energetics of Different Reactions 92
- The Equilibrium Constant Is Directly Proportional to ΔG° 96
- In Complex Reactions, the Equilibrium Constant Includes the Concentrations of All Reactants and Products 96

The Equilibrium Constant Also Indicates the Strength of Noncovalent Binding Interactions	97
For Sequential Reactions, the Changes in Free Energy Are Additive	98
Enzyme-catalyzed Reactions Depend on Rapid Molecular Collisions	99
Noncovalent Interactions Allow Enzymes to Bind Specific Molecules	100

ACTIVATED CARRIERS AND BIOSYNTHESIS 101

The Formation of an Activated Carrier Is Coupled to an Energetically Favorable Reaction	101
ATP Is the Most Widely Used Activated Carrier	104
Energy Stored in ATP Is Often Harnessed to Join Two Molecules Together	106
NADH and NADPH Are Both Activated Carriers of Electrons	106
NADPH and NADH Have Different Roles in Cells	108
Cells Make Use of Many Other Activated Carriers	108
The Synthesis of Biological Polymers Requires an Energy Input	110

ESSENTIAL CONCEPTS 113

QUESTIONS 114

CHAPTER 4

Protein Structure and Function 117

THE SHAPE AND STRUCTURE OF PROTEINS 119

The Shape of a Protein Is Specified by Its Amino Acid Sequence	119
Proteins Fold into a Conformation of Lowest Energy	122
Proteins Come in a Wide Variety of Complicated Shapes	124
The α Helix and the β Sheet Are Common Folding Patterns	126
Helices Form Readily in Biological Structures	127
β Sheets Form Rigid Structures at the Core of Many Proteins	129
Misfolded Proteins Can Form Amyloid Structures That Cause Disease	129
Proteins Have Several Levels of Organization	129
Proteins Also Contain Unstructured Regions	130
Few of the Many Possible Polypeptide Chains Will Be Useful	131
Proteins Can Be Classified into Families	132
Large Protein Molecules Often Contain More than One Polypeptide Chain	132
Proteins Can Assemble into Filaments, Sheets, or Spheres	134
Some Types of Proteins Have Elongated Fibrous Shapes	134
Extracellular Proteins Are Often Stabilized by Covalent Cross-Linkages	135

HOW PROTEINS WORK 137

All Proteins Bind to Other Molecules	137
Humans Produce Billions of Different Antibodies, Each with a Different Binding Site	138
Enzymes Are Powerful and Highly Specific Catalysts	139
Enzymes Greatly Accelerate the Speed of Chemical Reactions	142
Lysozyme Illustrates How an Enzyme Works	143
Many Drugs Inhibit Enzymes	147
Tightly Bound Small Molecules Add Extra Functions to Proteins	148

HOW PROTEINS ARE CONTROLLED 149

The Catalytic Activities of Enzymes Are Often Regulated by Other Molecules	150
Allosteric Enzymes Have Two or More Binding Sites That Influence One Another	151
Phosphorylation Can Control Protein Activity by Causing a Conformational Change	152
Covalent Modifications Also Control the Location and Interaction of Proteins	153
Regulatory GTP-Binding Proteins Are Switched On and Off by the Gain and Loss of a Phosphate Group	154



ATP Hydrolysis Allows Motor Proteins to Produce Directed Movements in Cells 154

Proteins Often Form Large Complexes That Function as Machines 155

Many Interacting Proteins Are Brought Together by Scaffolds 156

Weak Interactions Between Macromolecules Can Produce Large Biochemical Subcompartments in Cells 157

HOW PROTEINS ARE STUDIED 158

Proteins Can Be Purified from Cells or Tissues 158

Determining a Protein's Structure Begins with Determining Its Amino Acid Sequence 159

Genetic Engineering Techniques Permit the Large-Scale Production, Design, and Analysis of Almost Any Protein 161

The Relatedness of Proteins Aids the Prediction of Protein Structure and Function 162

ESSENTIAL CONCEPTS 162

QUESTIONS 170



CHAPTER 5

DNA and Chromosomes 173

THE STRUCTURE OF DNA 174

A DNA Molecule Consists of Two Complementary Chains of Nucleotides 175

The Structure of DNA Provides a Mechanism for Heredity 176

THE STRUCTURE OF EUKARYOTIC CHROMOSOMES 178

Eukaryotic DNA Is Packaged into Multiple Chromosomes 179

Chromosomes Organize and Carry Genetic Information 180

Specialized DNA Sequences Are Required for DNA Replication and Chromosome Segregation 181

Interphase Chromosomes Are Not Randomly Distributed Within the Nucleus 182

The DNA in Chromosomes Is Always Highly Condensed 183

Nucleosomes Are the Basic Units of Eukaryotic Chromosome Structure 184

Chromosome Packing Occurs on Multiple Levels 186

THE REGULATION OF CHROMOSOME STRUCTURE 188

Changes in Nucleosome Structure Allow Access to DNA 188

Interphase Chromosomes Contain both Highly Condensed and More Extended Forms of Chromatin 189

ESSENTIAL CONCEPTS 192

QUESTIONS 196

CHAPTER 6**DNA Replication and Repair 199****DNA REPLICATION 200**

Base-Pairing Enables DNA Replication 200

DNA Synthesis Begins at Replication Origins 201

Two Replication Forks Form at Each Replication Origin 201

DNA Polymerase Synthesizes DNA Using a Parental Strand as a Template 205

The Replication Fork Is Asymmetrical 206

DNA Polymerase Is Self-correcting 207

Short Lengths of RNA Act as Primers for DNA Synthesis 208

Proteins at a Replication Fork Cooperate to Form a Replication Machine 210

Telomerase Replicates the Ends of Eukaryotic Chromosomes 213

Telomere Length Varies by Cell Type and with Age 214

DNA REPAIR 215

DNA Damage Occurs Continually in Cells 215

Cells Possess a Variety of Mechanisms for Repairing DNA 217

A DNA Mismatch Repair System Removes Replication Errors That Escape Proofreading 218

Double-Strand DNA Breaks Require a Different Strategy for Repair 219

Homologous Recombination Can Flawlessly Repair DNA Double-Strand Breaks 220

Failure to Repair DNA Damage Can Have Severe Consequences for a Cell or Organism 222

A Record of the Fidelity of DNA Replication and Repair Is Preserved in Genome Sequences 223

ESSENTIAL CONCEPTS 224**QUESTIONS 225****CHAPTER 7****From DNA to Protein: How Cells Read the Genome 227****FROM DNA TO RNA 228**

Portions of DNA Sequence Are Transcribed into RNA 229

Transcription Produces RNA That Is Complementary to One Strand of DNA 230

Cells Produce Various Types of RNA 232

Signals in the DNA Tell RNA Polymerase Where to Start and Stop Transcription 233

Initiation of Eukaryotic Gene Transcription Is a Complex Process 235

Eukaryotic RNA Polymerase Requires General Transcription Factors 235

Eukaryotic mRNAs Are Processed in the Nucleus 237

In Eukaryotes, Protein-Coding Genes Are Interrupted by Noncoding Sequences Called Introns 239

Introns Are Removed from Pre-mRNAs by RNA Splicing 239

RNA Synthesis and Processing Takes Place in "Factories" Within the Nucleus 242

Mature Eukaryotic mRNAs Are Exported from the Nucleus 242

mRNA Molecules Are Eventually Degraded in the Cytosol 242

FROM RNA TO PROTEIN 243

An mRNA Sequence Is Decoded in Sets of Three Nucleotides 244

tRNA Molecules Match Amino Acids to Codons in mRNA 245



Specific Enzymes Couple tRNAs to the Correct Amino Acid	249
The mRNA Message Is Decoded on Ribosomes	249
The Ribosome Is a Ribozyme	252
Specific Codons in an mRNA Signal the Ribosome Where to Start and to Stop Protein Synthesis	253
Proteins Are Produced on Polyribosomes	255
Inhibitors of Prokaryotic Protein Synthesis Are Used as Antibiotics	255
Controlled Protein Breakdown Helps Regulate the Amount of Each Protein in a Cell	256
There Are Many Steps Between DNA and Protein	257
RNA AND THE ORIGINS OF LIFE	259
Life Requires Autocatalysis	259
RNA Can Store Information and Catalyze Chemical Reactions	260
RNA Is Thought to Predate DNA in Evolution	261
ESSENTIAL CONCEPTS	262
QUESTIONS	264



CHAPTER 8

Control of Gene Expression 267

AN OVERVIEW OF GENE EXPRESSION 268

The Different Cell Types of a Multicellular Organism Contain the Same DNA	268
Different Cell Types Produce Different Sets of Proteins	269
A Cell Can Change the Expression of Its Genes in Response to External Signals	270
Gene Expression Can Be Regulated at Various Steps from DNA to RNA to Protein	270

HOW TRANSCRIPTION IS REGULATED 271

Transcription Regulators Bind to Regulatory DNA Sequences	271
Transcription Switches Allow Cells to Respond to Changes in Their Environment	273
Repressors Turn Genes Off and Activators Turn Them On	274
The Lac Operon Is Controlled by an Activator and a Repressor	275
Eukaryotic Transcription Regulators Control Gene Expression from a Distance	276
Eukaryotic Transcription Regulators Help Initiate Transcription by Recruiting Chromatin-Modifying Proteins	276
The Arrangement of Chromosomes into Looped Domains Keeps Enhancers in Check	278

GENERATING SPECIALIZED CELL TYPES 278

Eukaryotic Genes Are Controlled by Combinations of Transcription Regulators	279
The Expression of Different Genes Can Be Coordinated by a Single Protein	279
Combinatorial Control Can Also Generate Different Cell Types	282
The Formation of an Entire Organ Can Be Triggered by a Single Transcription Regulator	284
Transcription Regulators Can Be Used to Experimentally Direct the Formation of Specific Cell Types in Culture	285
Differentiated Cells Maintain Their Identity	286

POST-TRANSCRIPTIONAL CONTROLS 287

- mRNAs Contain Sequences That Control Their Translation 288
- Regulatory RNAs Control the Expression of Thousands of Genes 288
- MicroRNAs Direct the Destruction of Target mRNAs 289
- Small Interfering RNAs Protect Cells From Infections 290
- Thousands of Long Noncoding RNAs May Also Regulate Mammalian Gene Activity 291

ESSENTIAL CONCEPTS 292**QUESTIONS 293****CHAPTER 9****How Genes and Genomes Evolve 297****GENERATING GENETIC VARIATION 298**

- In Sexually Reproducing Organisms, Only Changes to the Germ Line Are Passed On to Progeny 299
- Point Mutations Are Caused by Failures of the Normal Mechanisms for Copying and Repairing DNA 300
- Mutations Can Also Change the Regulation of a Gene 302
- DNA Duplications Give Rise to Families of Related Genes 302
- Duplication and Divergence Produced the Globin Gene Family 304
- Whole-Genome Duplications Have Shaped the Evolutionary History of Many Species 306
- Novel Genes Can Be Created by Exon Shuffling 306
- The Evolution of Genomes Has Been Profoundly Influenced by Mobile Genetic Elements 307
- Genes Can Be Exchanged Between Organisms by Horizontal Gene Transfer 308

RECONSTRUCTING LIFE'S FAMILY TREE 309

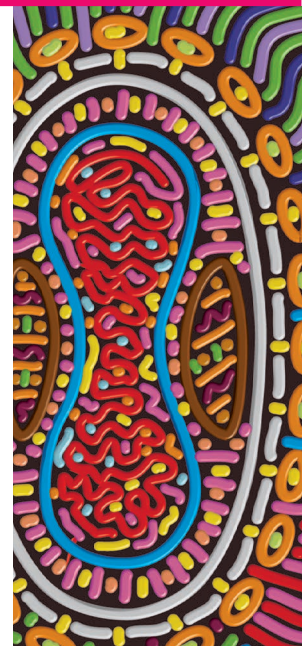
- Genetic Changes That Provide a Selective Advantage Are Likely to Be Preserved 309
- Closely Related Organisms Have Genomes That Are Similar in Organization as Well as Sequence 310
- Functionally Important Genome Regions Show Up as Islands of Conserved DNA Sequence 310
- Genome Comparisons Show That Vertebrate Genomes Gain and Lose DNA Rapidly 313
- Sequence Conservation Allows Us to Trace Even the Most Distant Evolutionary Relationships 313

MOBILE GENETIC ELEMENTS AND VIRUSES 315

- Mobile Genetic Elements Encode the Components They Need for Movement 315
- The Human Genome Contains Two Major Families of Transposable Sequences 316
- Viruses Can Move Between Cells and Organisms 317
- Retroviruses Reverse the Normal Flow of Genetic Information 318

EXAMINING THE HUMAN GENOME 320

- The Nucleotide Sequences of Human Genomes Show How Our Genes Are Arranged 321
- Differences in Gene Regulation May Help Explain How Animals with Similar Genomes Can Be So Different 323
- The Genome of Extinct Neanderthals Reveals Much about What Makes Us Human 326
- Genome Variation Contributes to Our Individuality—But How? 327

ESSENTIAL CONCEPTS 328**QUESTIONS 329**

**CHAPTER 10****Analyzing the Structure and Function of Genes 333****ISOLATING AND CLONING DNA MOLECULES 334**

- Restriction Enzymes Cut DNA Molecules at Specific Sites 335
- Gel Electrophoresis Separates DNA Fragments of Different Sizes 335
- DNA Cloning Begins with the Production of Recombinant DNA 337
- Recombinant DNA Can Be Copied Inside Bacterial Cells 337
- An Entire Genome Can Be Represented in a DNA Library 339
- Hybridization Provides a Sensitive Way to Detect Specific Nucleotide Sequences 340

DNA CLONING BY PCR 341

- PCR Uses DNA Polymerase and Specific DNA Primers to Amplify DNA Sequences in a Test Tube 342
- PCR Can Be Used for Diagnostic and Forensic Applications 343

SEQUENCING DNA 346

- Dideoxy Sequencing Depends on the Analysis of DNA Chains Terminated at Every Position 346
- Next-Generation Sequencing Techniques Make Genome Sequencing Faster and Cheaper 347
- Comparative Genome Analyses Can Identify Genes and Predict Their Function 350

EXPLORING GENE FUNCTION 350

- Analysis of mRNAs Provides a Snapshot of Gene Expression 351
- In Situ* Hybridization Can Reveal When and Where a Gene Is Expressed 352
- Reporter Genes Allow Specific Proteins to Be Tracked in Living Cells 352
- The Study of Mutants Can Help Reveal the Function of a Gene 354
- RNA Interference (RNAi) Inhibits the Activity of Specific Genes 354
- A Known Gene Can Be Deleted or Replaced with an Altered Version 355
- Genes Can Be Edited with Great Precision Using the Bacterial CRISPR System 358
- Mutant Organisms Provide Useful Models of Human Disease 359
- Transgenic Plants Are Important for both Cell Biology and Agriculture 359
- Even Rare Proteins Can Be Made in Large Amounts Using Cloned DNA 361

ESSENTIAL CONCEPTS 362**QUESTIONS 363**

CHAPTER 11**Membrane Structure 365****THE LIPID BILAYER 367**

- Membrane Lipids Form Bilayers in Water 367
- The Lipid Bilayer Is a Flexible Two-dimensional Fluid 370
- The Fluidity of a Lipid Bilayer Depends on Its Composition 371
- Membrane Assembly Begins in the ER 373
- Certain Phospholipids Are Confined to One Side of the Membrane 373

MEMBRANE PROTEINS 375

- Membrane Proteins Associate with the Lipid Bilayer in Different Ways 376
- A Polypeptide Chain Usually Crosses the Lipid Bilayer as an α Helix 377
- Membrane Proteins Can Be Solubilized in Detergents 378
- We Know the Complete Structure of Relatively Few Membrane Proteins 379
- The Plasma Membrane Is Reinforced by the Underlying Cell Cortex 380
- A Cell Can Restrict the Movement of Its Membrane Proteins 381
- The Cell Surface Is Coated with Carbohydrate 382

ESSENTIAL CONCEPTS 386**QUESTIONS 387****CHAPTER 12****Transport Across Cell Membranes 389****PRINCIPLES OF TRANSMEMBRANE TRANSPORT 390**

- Lipid Bilayers Are Impermeable to Ions and Most Uncharged Polar Molecules 390
- The Ion Concentrations Inside a Cell Are Very Different from Those Outside 391
- Differences in the Concentration of Inorganic Ions Across a Cell Membrane Create a Membrane Potential 391
- Cells Contain Two Classes of Membrane Transport Proteins: Transporters and Channels 392
- Solutes Cross Membranes by Either Passive or Active Transport 392
- Both the Concentration Gradient and Membrane Potential Influence the Passive Transport of Charged Solutes 393
- Water Moves Across Cell Membranes Down Its Concentration Gradient—a Process Called Osmosis 394

TRANSPORTERS AND THEIR FUNCTIONS 395

- Passive Transporters Move a Solute Along Its Electrochemical Gradient 396
- Pumps Actively Transport a Solute Against Its Electrochemical Gradient 396
- The Na^+ Pump in Animal Cells Uses Energy Supplied by ATP to Expel Na^+ and Bring in K^+ 397
- The Na^+ Pump Generates a Steep Concentration Gradient of Na^+ Across the Plasma Membrane 398
- Ca^{2+} Pumps Keep the Cytosolic Ca^{2+} Concentration Low 399
- Gradient-driven Pumps Exploit Solute Gradients to Mediate Active Transport 399
- The Electrochemical Na^+ Gradient Drives the Transport of Glucose Across the Plasma Membrane of Animal Cells 400
- Electrochemical H^+ Gradients Drive the Transport of Solutes in Plants, Fungi, and Bacteria 402

ION CHANNELS AND THE MEMBRANE POTENTIAL 403

- Ion Channels Are Ion-selective and Gated 404
- Membrane Potential Is Governed by the Permeability of a Membrane to Specific Ions 405



Ion Channels Randomly Snap Between Open and Closed States	407
Different Types of Stimuli Influence the Opening and Closing of Ion Channels	408
Voltage-gated Ion Channels Respond to the Membrane Potential	409
ION CHANNELS AND NERVE CELL SIGNALING	410
Action Potentials Allow Rapid Long-Distance Communication Along Axons	411
Action Potentials Are Mediated by Voltage-gated Cation Channels	411
Voltage-gated Ca^{2+} Channels in Nerve Terminals Convert an Electrical Signal into a Chemical Signal	416
Transmitter-gated Ion Channels in the Postsynaptic Membrane Convert the Chemical Signal Back into an Electrical Signal	417
Neurotransmitters Can Be Excitatory or Inhibitory	418
Most Psychoactive Drugs Affect Synaptic Signaling by Binding to Neurotransmitter Receptors	419
The Complexity of Synaptic Signaling Enables Us to Think, Act, Learn, and Remember	420
Light-gated Ion Channels Can Be Used to Transiently Activate or Inactivate Neurons in Living Animals	421
ESSENTIAL CONCEPTS	422
QUESTIONS	424



CHAPTER 13

How Cells Obtain Energy from Food 427

THE BREAKDOWN AND UTILIZATION OF SUGARS AND FATS 428

Food Molecules Are Broken Down in Three Stages	428
Glycolysis Extracts Energy from the Splitting of Sugar	430
Glycolysis Produces both ATP and NADH	431
Fermentations Can Produce ATP in the Absence of Oxygen	433
Glycolytic Enzymes Couple Oxidation to Energy Storage in Activated Carriers	434
Several Types of Organic Molecules Are Converted to Acetyl CoA in the Mitochondrial Matrix	438
The Citric Acid Cycle Generates NADH by Oxidizing Acetyl Groups to CO_2	438
Many Biosynthetic Pathways Begin with Glycolysis or the Citric Acid Cycle	441
Electron Transport Drives the Synthesis of the Majority of the ATP in Most Cells	446

REGULATION OF METABOLISM 447

Catabolic and Anabolic Reactions Are Organized and Regulated	447
Feedback Regulation Allows Cells to Switch from Glucose Breakdown to Glucose Synthesis	447
Cells Store Food Molecules in Special Reservoirs to Prepare for Periods of Need	449

ESSENTIAL CONCEPTS 451

QUESTIONS 452

CHAPTER 14**Energy Generation in Mitochondria and Chloroplasts 455**

Cells Obtain Most of Their Energy by a Membrane-based Mechanism 456
Chemiosmotic Coupling Is an Ancient Process, Preserved in Present-Day Cells 457

MITOCHONDRIA AND OXIDATIVE PHOSPHORYLATION 459

Mitochondria Are Dynamic in Structure, Location, and Number 459
A Mitochondrion Contains an Outer Membrane, an Inner Membrane, and Two Internal Compartments 460
The Citric Acid Cycle Generates High-Energy Electrons Required for ATP Production 461
The Movement of Electrons Is Coupled to the Pumping of Protons 462
Electrons Pass Through Three Large Enzyme Complexes in the Inner Mitochondrial Membrane 464
Proton Pumping Produces a Steep Electrochemical Proton Gradient Across the Inner Mitochondrial Membrane 464
ATP Synthase Uses the Energy Stored in the Electrochemical Proton Gradient to Produce ATP 465
The Electrochemical Proton Gradient Also Drives Transport Across the Inner Mitochondrial Membrane 466
The Rapid Conversion of ADP to ATP in Mitochondria Maintains a High ATP/ADP Ratio in Cells 467
Cell Respiration Is Amazingly Efficient 468

MOLECULAR MECHANISMS OF ELECTRON TRANSPORT AND PROTON PUMPING 469

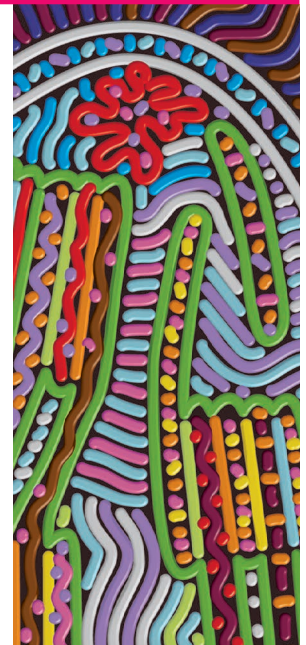
Protons Are Readily Moved by the Transfer of Electrons 469
The Redox Potential Is a Measure of Electron Affinities 470
Electron Transfers Release Large Amounts of Energy 471
Metals Tightly Bound to Proteins Form Versatile Electron Carriers 471
Cytochrome c Oxidase Catalyzes the Reduction of Molecular Oxygen 474

CHLOROPLASTS AND PHOTOSYNTHESIS 478

Chloroplasts Resemble Mitochondria but Have an Extra Compartment—the Thylakoid 478
Photosynthesis Generates—and Then Consumes—ATP and NADPH 479
Chlorophyll Molecules Absorb the Energy of Sunlight 480
Excited Chlorophyll Molecules Funnel Energy into a Reaction Center 481
A Pair of Photosystems Cooperate to Generate both ATP and NADPH 482
Oxygen Is Generated by a Water-Splitting Complex Associated with Photosystem II 483
The Special Pair in Photosystem I Receives its Electrons from Photosystem II 484
Carbon Fixation Uses ATP and NADPH to Convert CO₂ into Sugars 484
Sugars Generated by Carbon Fixation Can Be Stored as Starch or Consumed to Produce ATP 487

THE EVOLUTION OF ENERGY-GENERATING SYSTEMS 488

Oxidative Phosphorylation Evolved in Stages 488
Photosynthetic Bacteria Made Even Fewer Demands on Their Environment 489
The Lifestyle of *Methanococcus* Suggests That Chemiosmotic Coupling Is an Ancient Process 490

ESSENTIAL CONCEPTS 491**QUESTIONS 492**



CHAPTER 15

Intracellular Compartments and Protein Transport 495

MEMBRANE-ENCLOSED ORGANELLES 496

Eukaryotic Cells Contain a Basic Set of Membrane-enclosed Organelles 496

Membrane-enclosed Organelles Evolved in Different Ways 499

PROTEIN SORTING 500

Proteins Are Transported into Organelles by Three Mechanisms 500

Signal Sequences Direct Proteins to the Correct Compartment 502

Proteins Enter the Nucleus Through Nuclear Pores 503

Proteins Unfold to Enter Mitochondria and Chloroplasts 505

Proteins Enter Peroxisomes from both the Cytosol and the Endoplasmic Reticulum 506

Proteins Enter the Endoplasmic Reticulum While Being Synthesized 507

Soluble Proteins Made on the ER Are Released into the ER Lumen 508

Start and Stop Signals Determine the Arrangement of a Transmembrane Protein in the Lipid Bilayer 509

VESICULAR TRANSPORT 511

Transport Vesicles Carry Soluble Proteins and Membrane Between Compartments 511

Vesicle Budding Is Driven by the Assembly of a Protein Coat 512

Vesicle Docking Depends on Tethers and SNAREs 514

SECRETORY PATHWAYS 515

Most Proteins Are Covalently Modified in the ER 516

Exit from the ER Is Controlled to Ensure Protein Quality 517

The Size of the ER Is Controlled by the Demand for Protein Folding 518

Proteins Are Further Modified and Sorted in the Golgi Apparatus 518

Secretory Proteins Are Released from the Cell by Exocytosis 519

ENDOCYTIC PATHWAYS 523

Specialized Phagocytic Cells Ingest Large Particles 523

Fluid and Macromolecules Are Taken Up by Pinocytosis 524

Receptor-mediated Endocytosis Provides a Specific Route into Animal Cells 525

Endocytosed Macromolecules Are Sorted in Endosomes 526

Lysosomes Are the Principal Sites of Intracellular Digestion 527

ESSENTIAL CONCEPTS 528

QUESTIONS 530

CHAPTER 16**Cell Signaling 533****GENERAL PRINCIPLES OF CELL SIGNALING 534**

Signals Can Act over a Long or Short Range 534

A Limited Set of Extracellular Signals Can Produce a Huge Variety of Cell Behaviors 537

A Cell's Response to a Signal Can Be Fast or Slow 538

Cell-Surface Receptors Relay Extracellular Signals via Intracellular Signaling Pathways 539

Some Intracellular Signaling Proteins Act as Molecular Switches 541

Cell-Surface Receptors Fall into Three Main Classes 543

Ion-Channel-Coupled Receptors Convert Chemical Signals into Electrical Ones 544

G-PROTEIN-COUPLED RECEPTORS 545

Stimulation of GPCRs Activates G-Protein Subunits 545

Some Bacterial Toxins Cause Disease by Altering the Activity of G Proteins 547

Some G Proteins Directly Regulate Ion Channels 548

Many G Proteins Activate Membrane-bound Enzymes That Produce Small Messenger Molecules 549

The Cyclic AMP Signaling Pathway Can Activate Enzymes and Turn On Genes 549

The Inositol Phospholipid Pathway Triggers a Rise in Intracellular Ca^{2+} 552

A Ca^{2+} Signal Triggers Many Biological Processes 553

A GPCR Signaling Pathway Generates a Dissolved Gas That Carries a Signal to Adjacent Cells 554

GPCR-Triggered Intracellular Signaling Cascades Can Achieve Astonishing Speed, Sensitivity, and Adaptability 555

ENZYME-COUPLED RECEPTORS 557

Activated RTKs Recruit a Complex of Intracellular Signaling Proteins 558

Most RTKs Activate the Monomeric GTPase Ras 559

RTKs Activate PI 3-Kinase to Produce Lipid Docking Sites in the Plasma Membrane 560

Some Receptors Activate a Fast Track to the Nucleus 565

Some Extracellular Signal Molecules Cross the Plasma Membrane and Bind to Intracellular Receptors 565

Plants Make Use of Receptors and Signaling Strategies That Differ from Those Used by Animals 567

Protein Kinase Networks Integrate Information to Control Complex Cell Behaviors 567

ESSENTIAL CONCEPTS 569**QUESTIONS 571**



CHAPTER 17

Cytoskeleton 573

INTERMEDIATE FILAMENTS 575

- Intermediate Filaments Are Strong and Ropelike 575
- Intermediate Filaments Strengthen Cells Against Mechanical Stress 577
- The Nuclear Envelope Is Supported by a Meshwork of Intermediate Filaments 578
- Linker Proteins Connect Cytoskeletal Filaments and Bridge the Nuclear Envelope 579

MICROTUBULES 580

- Microtubules Are Hollow Tubes with Structurally Distinct Ends 581
- The Centrosome Is the Major Microtubule-organizing Center in Animal Cells 581
- Microtubules Display Dynamic Instability 582
- Dynamic Instability Is Driven by GTP Hydrolysis 583
- Microtubule Dynamics Can Be Modified by Drugs 584
- Microtubules Organize the Cell Interior 584
- Motor Proteins Drive Intracellular Transport 586
- Microtubules and Motor Proteins Position Organelles in the Cytoplasm 587
- Cilia and Flagella Contain Stable Microtubules Moved by Dynein 590

ACTIN FILAMENTS 592

- Actin Filaments Are Thin and Flexible 593
- Actin and Tubulin Polymerize by Similar Mechanisms 593
- Many Proteins Bind to Actin and Modify Its Properties 594
- A Cortex Rich in Actin Filaments Underlies the Plasma Membrane of Most Eukaryotic Cells 596
- Cell Crawling Depends on Cortical Actin 596
- Actin-binding Proteins Influence the Type of Protrusions Formed at the Leading Edge 598
- Extracellular Signals Can Alter the Arrangement of Actin Filaments 598
- Actin Associates with Myosin to Form Contractile Structures 599

MUSCLE CONTRACTION 600

- Muscle Contraction Depends on Interacting Filaments of Actin and Myosin 600
- Actin Filaments Slide Against Myosin Filaments During Muscle Contraction 601
- Muscle Contraction Is Triggered by a Sudden Rise in Cytosolic Ca^{2+} 604
- Different Types of Muscle Cells Perform Different Functions 605

ESSENTIAL CONCEPTS 606

QUESTIONS 607

CHAPTER 18**The Cell-Division Cycle 609****OVERVIEW OF THE CELL CYCLE 610**

- The Eukaryotic Cell Cycle Usually Includes Four Phases 611
- A Cell-Cycle Control System Triggers the Major Processes of the Cell Cycle 612
- Cell-Cycle Control Is Similar in All Eukaryotes 613

THE CELL-CYCLE CONTROL SYSTEM 613

- The Cell-Cycle Control System Depends on Cyclically Activated Protein Kinases Called Cdks 613
- Different Cyclin–Cdk Complexes Trigger Different Steps in the Cell Cycle 614
- Cyclin Concentrations Are Regulated by Transcription and by Proteolysis 617
- The Activity of Cyclin–Cdk Complexes Depends on Phosphorylation and Dephosphorylation 618
- Cdk Activity Can Be Blocked by Cdk Inhibitor Proteins 618
- The Cell-Cycle Control System Can Pause the Cycle in Various Ways 618

G₁ PHASE 620

- Cdks Are Stably Inactivated in G₁ 620
- Mitogens Promote the Production of the Cyclins That Stimulate Cell Division 620
- DNA Damage Can Temporarily Halt Progression Through G₁ 621
- Cells Can Delay Division for Prolonged Periods by Entering Specialized Nondividing States 621

S PHASE 623

- S-Cdk Initiates DNA Replication and Blocks Re-Replication 623
- Incomplete Replication Can Arrest the Cell Cycle in G₂ 623

M PHASE 624

- M-Cdk Drives Entry into Mitosis 625
- Cohesins and Condensins Help Configure Duplicated Chromosomes for Separation 625
- Different Cytoskeletal Assemblies Carry Out Mitosis and Cytokinesis 626
- M Phase Occurs in Stages 627

MITOSIS 627

- Centrosomes Duplicate to Help Form the Two Poles of the Mitotic Spindle 627
- The Mitotic Spindle Starts to Assemble in Prophase 630
- Chromosomes Attach to the Mitotic Spindle at Prometaphase 630
- Chromosomes Assist in the Assembly of the Mitotic Spindle 632
- Chromosomes Line Up at the Spindle Equator at Metaphase 632
- Proteolysis Triggers Sister-Chromatid Separation at Anaphase 633
- Chromosomes Segregate During Anaphase 634
- An Unattached Chromosome Will Prevent Sister-Chromatid Separation 634
- The Nuclear Envelope Re-forms at Telophase 635

CYTOKINESIS 636

- The Mitotic Spindle Determines the Plane of Cytoplasmic Cleavage 636
- The Contractile Ring of Animal Cells Is Made of Actin and Myosin Filaments 637
- Cytokinesis in Plant Cells Involves the Formation of a New Cell Wall 638
- Membrane-enclosed Organelles Must Be Distributed to Daughter Cells When a Cell Divides 638



CONTROL OF CELL NUMBERS AND CELL SIZE 639

Apoptosis Helps Regulate Animal Cell Numbers 640

Apoptosis Is Mediated by an Intracellular Proteolytic Cascade 640

The Intrinsic Apoptotic Death Program Is Regulated by the Bcl2 Family of Intracellular Proteins 642

Apoptotic Signals Can Also Come from Other Cells 642

Animal Cells Require Extracellular Signals to Survive, Grow, and Divide 642

Survival Factors Suppress Apoptosis 643

Mitogens Stimulate Cell Division by Promoting Entry into S Phase 644

Growth Factors Stimulate Cells to Grow 644

Some Extracellular Signal Proteins Inhibit Cell Survival, Division, or Growth 645

ESSENTIAL CONCEPTS 646**QUESTIONS 648****CHAPTER 19****Sexual Reproduction and Genetics 651****THE BENEFITS OF SEX 652**

Sexual Reproduction Involves both Diploid and Haploid Cells 652

Sexual Reproduction Generates Genetic Diversity 653

Sexual Reproduction Gives Organisms a Competitive Advantage in a Changing Environment 654

MEIOSIS AND FERTILIZATION 654

Meiosis Involves One Round of DNA Replication Followed by Two Rounds of Nuclear Division 655

Duplicated Homologous Chromosomes Pair During Meiotic Prophase 657

Crossing-Over Occurs Between the Duplicated Maternal and Paternal Chromosomes in Each Bivalent 657

Chromosome Pairing and Crossing-Over Ensure the Proper Segregation of Homologs 659

The Second Meiotic Division Produces Haploid Daughter Nuclei 660

Haploid Gametes Contain Reassorted Genetic Information 660

Meiosis Is Not Flawless 662

Fertilization Reconstitutes a Complete Diploid Genome 663

MENDEL AND THE LAWS OF INHERITANCE 664

Mendel Studied Traits That Are Inherited in a Discrete Fashion 664

Mendel Disproved the Alternative Theories of Inheritance 664

Mendel's Experiments Revealed the Existence of Dominant and Recessive Alleles 665

Each Gamete Carries a Single Allele for Each Character 666

Mendel's Law of Segregation Applies to All Sexually Reproducing Organisms 667

Alleles for Different Traits Segregate Independently 668

The Behavior of Chromosomes During Meiosis Underlies Mendel's Laws of Inheritance 669

Genes That Lie on the Same Chromosome Can Segregate Independently by Crossing-Over 671

Mutations in Genes Can Cause a Loss of Function or a Gain of Function 672

Each of Us Carries Many Potentially Harmful Recessive Mutations 673

GENETICS AS AN EXPERIMENTAL TOOL 674

- The Classical Genetic Approach Begins with Random Mutagenesis 674
- Genetic Screens Identify Mutants Deficient in Specific Cell Processes 676
- Conditional Mutants Permit the Study of Lethal Mutations 676
- A Complementation Test Reveals Whether Two Mutations Are in the Same Gene 678

EXPLORING HUMAN GENETICS 678

- Linked Blocks of Polymorphisms Have Been Passed Down from Our Ancestors 679
- Polymorphisms Provide Clues to Our Evolutionary History 679
- Genetic Studies Aid in the Search for the Causes of Human Diseases 680
- Many Severe, Rare Human Diseases Are Caused by Mutations in Single Genes 681
- Common Human Diseases Are Often Influenced by Multiple Mutations and Environmental Factors 682
- Genome-wide Association Studies Can Aid the Search for Mutations Associated with Disease 683
- We Still Have Much to Learn about the Genetic Basis of Human Variation and Disease 686

ESSENTIAL CONCEPTS 687**QUESTIONS 688****CHAPTER 20****Cell Communities: Tissues, Stem Cells, and Cancer 691****EXTRACELLULAR MATRIX AND CONNECTIVE TISSUES 692**

- Plant Cells Have Tough External Walls 693
- Cellulose Microfibrils Give the Plant Cell Wall Its Tensile Strength 694
- Animal Connective Tissues Consist Largely of Extracellular Matrix 695
- Collagen Provides Tensile Strength in Animal Connective Tissues 696
- Cells Organize the Collagen They Secrete 697
- Integrins Couple the Matrix Outside a Cell to the Cytoskeleton Inside It 698
- Gels of Polysaccharides and Proteins Fill Spaces and Resist Compression 700

EPITHELIAL SHEETS AND CELL JUNCTIONS 701

- Epithelial Sheets Are Polarized and Rest on a Basal Lamina 702
- Tight Junctions Make an Epithelium Leakproof and Separate Its Apical and Basolateral Surfaces 703
- Cytoskeleton-linked Junctions Bind Epithelial Cells Robustly to One Another and to the Basal Lamina 704
- Gap Junctions Allow Cytosolic Inorganic Ions and Small Molecules to Pass from Cell to Cell 707

STEM CELLS AND TISSUE RENEWAL 709

- Tissues Are Organized Mixtures of Many Cell Types 710
- Different Tissues Are Renewed at Different Rates 711
- Stem Cells and Proliferating Precursor Cells Generate a Continuous Supply of Terminally Differentiated Cells 712
- Specific Signals Maintain Stem-Cell Populations 714
- Stem Cells Can Be Used to Repair Lost or Damaged Tissues 715
- Induced Pluripotent Stem Cells Provide a Convenient Source of Human ES-like Cells 716
- Mouse and Human Pluripotent Stem Cells Can Form Organoids in Culture 717



CANCER 718

Cancer Cells Proliferate Excessively and Migrate Inappropriately 718

Epidemiological Studies Identify Preventable Causes of Cancer 719

Cancers Develop by an Accumulation of Somatic Mutations 720

Cancer Cells Evolve, Acquiring an Increasing Competitive Advantage 721

Two Main Classes of Genes Are Critical for Cancer: Oncogenes and Tumor Suppressor Genes 723

Cancer-critical Mutations Cluster in a Few Fundamental Pathways 725

Colorectal Cancer Illustrates How Loss of a Tumor Suppressor Gene Can Lead to Cancer 726

An Understanding of Cancer Cell Biology Opens the Way to New Treatments 727

ESSENTIAL CONCEPTS 729

QUESTIONS 733

ANSWERS A:1

GLOSSARY G:1

INDEX I:1



CHAPTER ONE

1

Cells: The Fundamental Units of Life

What does it mean to be living? Petunias, people, and pond scum are all alive; stones, sand, and summer breezes are not. But what are the fundamental properties that characterize living things and distinguish them from nonliving matter?

The answer hinges on a basic fact that is taken for granted now but marked a revolution in thinking when first established more than 175 years ago. All living things (or *organisms*) are built from **cells**: small, membrane-enclosed units filled with a concentrated aqueous solution of chemicals and endowed with the extraordinary ability to create copies of themselves by growing and then dividing in two. The simplest forms of life are solitary cells. Higher organisms, including ourselves, are communities of cells derived by growth and division from a single founder cell. Every animal or plant is a vast colony of individual cells, each of which performs a specialized function that is integrated by intricate systems of cell-to-cell communication.

Cells, therefore, are the fundamental units of life. Thus it is to *cell biology*—the study of cells and their structure, function, and behavior—that we look for an answer to the question of what life is and how it works. With a deeper understanding of cells, we can begin to tackle the grand historical problems of life on Earth: its mysterious origins, its stunning diversity produced by billions of years of evolution, and its invasion of every conceivable habitat on the planet. At the same time, cell biology can provide us with answers to the questions we have about ourselves: Where did we come from? How do we develop from a single fertilized egg cell? How is each of us similar to—yet different from—everyone else on Earth? Why do we get sick, grow old, and die?

UNITY AND DIVERSITY OF CELLS

CELLS UNDER THE MICROSCOPE

THE PROKARYOTIC CELL

THE EUKARYOTIC CELL

MODEL ORGANISMS

In this chapter, we introduce the concept of cells: what they are, where they come from, and how we have learned so much about them. We begin by looking at the great variety of forms that cells can adopt, and we take a preliminary glimpse at the chemical machinery that all cells have in common. We then consider how cells are made visible under the microscope and what we see when we peer inside them. Finally, we discuss how we can exploit the similarities of living things to achieve a coherent understanding of all forms of life on Earth—from the tiniest bacterium to the mightiest oak.

UNITY AND DIVERSITY OF CELLS

Biologists estimate that there may be up to 100 million distinct species of living things on our planet—organisms as different as a dolphin and a rose or a bacterium and a butterfly. Cells, too, differ vastly in form and function. Animal cells differ from those in a plant, and even cells within a single multicellular organism can differ wildly in appearance and activity. Yet despite these differences, all cells share a fundamental chemistry and other common features.

In this section, we take stock of some of the similarities and differences among cells, and we discuss how all present-day cells appear to have evolved from a common ancestor.

Cells Vary Enormously in Appearance and Function

When comparing one cell and another, one of the most obvious places to start is with size. A bacterial cell—say a *Lactobacillus* in a piece of cheese—is a few **micrometers**, or μm , in length. That's about 25 times smaller than the width of a human hair. At the other extreme, a frog egg—which is also a single cell—has a diameter of about 1 millimeter (mm). If we scaled them up to make the *Lactobacillus* the size of a person, the frog egg would be half a mile high.

Cells vary just as widely in their shape (**Figure 1-1**). A typical nerve cell in your brain, for example, is enormously extended: it sends out its electrical signals along a single, fine protrusion (an axon) that is 10,000 times longer than it is thick, and the cell receives signals from other nerve cells through a collection of shorter extensions that sprout from its body like the branches of a tree (see Figure 1-1A). A pond-dwelling *Paramecium*, on the other hand, is shaped like a submarine and is covered with thousands of *cilia*—hairlike projections whose sinuous, coordinated beating sweeps the cell forward, rotating as it goes (Figure 1-1B). A cell in the surface layer of a plant is squat and immobile, surrounded by a rigid box of cellulose with an outer waterproof coating of wax (Figure 1-1C). A macrophage in the body of an animal, by contrast, crawls through tissues, constantly pouring itself into new shapes, as it searches for and engulfs debris, foreign microorganisms, and dead or dying cells (Figure 1-1D). A fission yeast is shaped like a rod (Figure 1-1E), whereas a budding yeast is delightfully spherical (see Figure 1-14). And so on.

Cells are also enormously diverse in their chemical requirements. Some require oxygen to live; for others the gas is deadly. Some cells consume little more than carbon dioxide (CO_2), sunlight, and water as their raw materials; others need a complex mixture of molecules produced by other cells.

These differences in size, shape, and chemical requirements often reflect differences in cell function. Some cells are specialized factories for the production of particular substances, such as hormones, starch, fat, latex, or pigments. Others, like muscle cells, are engines that burn fuel to do

mechanical work. Still others are electricity generators, like the modified muscle cells in the electric eel.

Some modifications specialize a cell so much that the cell ceases to proliferate, thus producing no descendants. Such specialization would be senseless for a cell that lived a solitary life. In a multicellular organism, however, there is a division of labor among cells, allowing some cells to become specialized to an extreme degree for particular tasks and leaving them dependent on their fellow cells for many basic requirements. Even the most basic need of all, that of passing on the genetic instructions of the organism to the next generation, is delegated to specialists—the egg and the sperm.

Living Cells All Have a Similar Basic Chemistry

Despite the extraordinary diversity of plants and animals, people have recognized from time immemorial that these organisms have something in common, something that entitles them all to be called living things. But while it seemed easy enough to recognize life, it was remarkably difficult to say in what sense all living things were alike. Textbooks had to settle for defining life in abstract general terms related to growth, reproduction, and an ability to actively alter their behavior in response to the environment.

The discoveries of biochemists and molecular biologists have provided an elegant solution to this awkward situation. Although the cells of all living things are enormously varied when viewed from the outside, they are fundamentally similar inside. We now know that cells resemble one another to an astonishing degree in the details of their chemistry. They are composed of the same sorts of molecules, which participate in the same types of chemical reactions (discussed in Chapter 2). In all organisms, genetic information—in the form of *genes*—is carried in DNA molecules. This information is written in the same chemical code, constructed out of the same chemical building blocks, interpreted by essentially the same chemical machinery, and replicated in the same way when a cell or

QUESTION 1–1

“Life” is easy to recognize but difficult to define. According to one popular biology text, living things:

1. Are highly organized compared to natural inanimate objects.
2. Display homeostasis, maintaining a relatively constant internal environment.
3. Reproduce themselves.
4. Grow and develop from simple beginnings.
5. Take energy and matter from the environment and transform it.
6. Respond to stimuli.
7. Show adaptation to their environment.

Score a person, a vacuum cleaner, and a potato with respect to these characteristics.

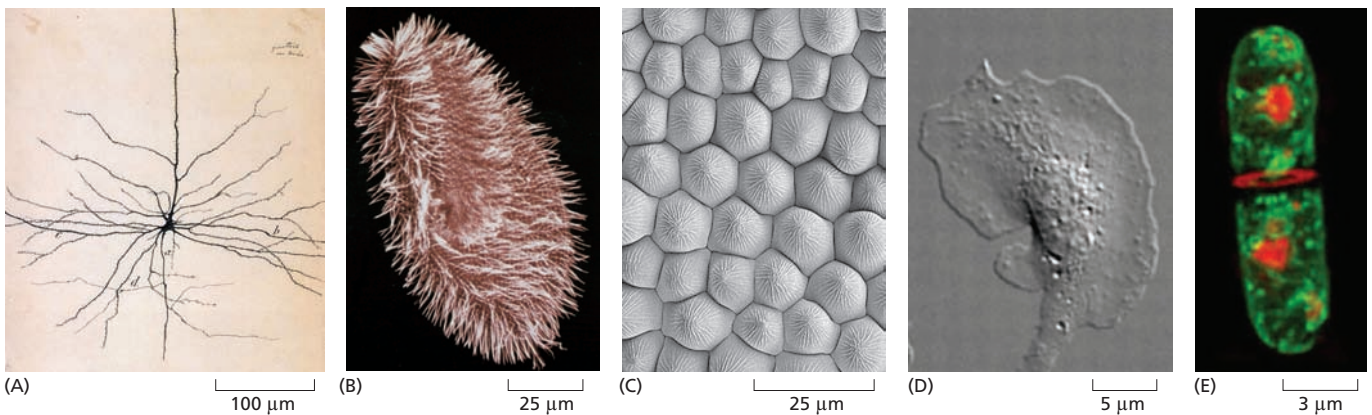


Figure 1–1 Cells come in a variety of shapes and sizes. Note the very different scales of these micrographs. (A) Drawing of a single nerve cell from a mammalian brain. This cell has a single, unbranched extension (axon), projecting toward the top of the image, through which it sends electrical signals to other nerve cells, and it possesses a huge branching tree of projections (dendrites) through which it receives signals from as many as 100,000 other nerve cells. (B) *Paramecium*. This protozoan—a single giant cell—swims by means of the beating cilia that cover its surface. (C) The surface of a snapdragon flower petal displays an orderly array of tightly packed cells. (D) A macrophage spreads itself out as it patrols animal tissues in search of invading microorganisms. (E) A fission yeast is caught in the act of dividing in two. The medial septum (stained red with a fluorescent dye) is forming a wall between the two nuclei (also stained red) that have been separated into the two daughter cells; in this image, the cells’ membranes are stained with a green fluorescent dye. (A, Herederos de Santiago Ramón y Cajal, 1899; B, courtesy of Anne Aubusson Fleury, Michel Laurent, and André Adoutte; C, courtesy of Kim Findlay; D, from P.J. Hanley et al., *Proc. Natl Acad. Sci. USA* 107:12145–12150, 2010. With permission from National Academy of Sciences; E, courtesy of Janos Demeter and Shelley Sazer.)

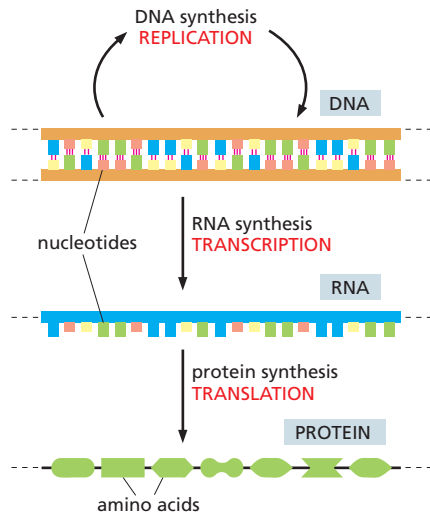


Figure 1–2 In all living cells, genetic information flows from DNA to RNA (transcription) and from RNA to protein (translation)—an arrangement known as the **central dogma**. The sequence of nucleotides in a particular segment of DNA (a gene) is transcribed into an RNA molecule, which can then be translated into the linear sequence of amino acids of a protein. Only a small part of the gene, RNA, and protein is shown.

organism reproduces. Thus, in every cell, long polymer chains of **DNA** are made from the same set of four monomers, called *nucleotides*, strung together in different sequences like the letters of an alphabet. The information encoded in these DNA molecules is read out, or *transcribed*, into a related set of polynucleotides called **RNA**. Although some of these RNA molecules have their own regulatory, structural, or chemical activities, most are *translated* into a different type of polymer called a **protein**. This flow of information—from DNA to RNA to protein—is so fundamental to life that it is referred to as the *central dogma* (**Figure 1–2**).

The appearance and behavior of a cell are dictated largely by its protein molecules, which serve as structural supports, chemical catalysts, molecular motors, and much more. Proteins are built from *amino acids*, and all organisms use the same set of 20 amino acids to make their proteins. But the amino acids are linked in different sequences, giving each type of protein molecule a different three-dimensional shape, or *conformation*, just as different sequences of letters spell different words. In this way, the same basic biochemical machinery has served to generate the whole gamut of life on Earth (**Figure 1–3**).

Living Cells Are Self-Replicating Collections of Catalysts

One of the most commonly cited properties of living things is their ability to reproduce. For cells, the process involves duplicating their genetic material and other components and then dividing in two—producing a pair of daughter cells that are themselves capable of undergoing the same cycle of replication.

It is the special relationship between DNA, RNA, and proteins—as outlined in the central dogma (see **Figure 1–2**)—that makes this self-replication possible. DNA encodes information that ultimately directs the assembly of proteins: the sequence of nucleotides in a molecule of DNA dictates the sequence of amino acids in a protein. Proteins, in turn, catalyze the replication of DNA and the transcription of RNA, and they participate in the translation of RNA into proteins. This feedback loop between proteins and polynucleotides underlies the self-reproducing behavior of living things (**Figure 1–4**). We discuss this complex interdependence between DNA, RNA, and proteins in detail in Chapters 5 through 8.

In addition to their roles in polynucleotide and protein synthesis, proteins also catalyze the many other chemical reactions that keep the self-replicating system shown in **Figure 1–4** running. A living cell can break down

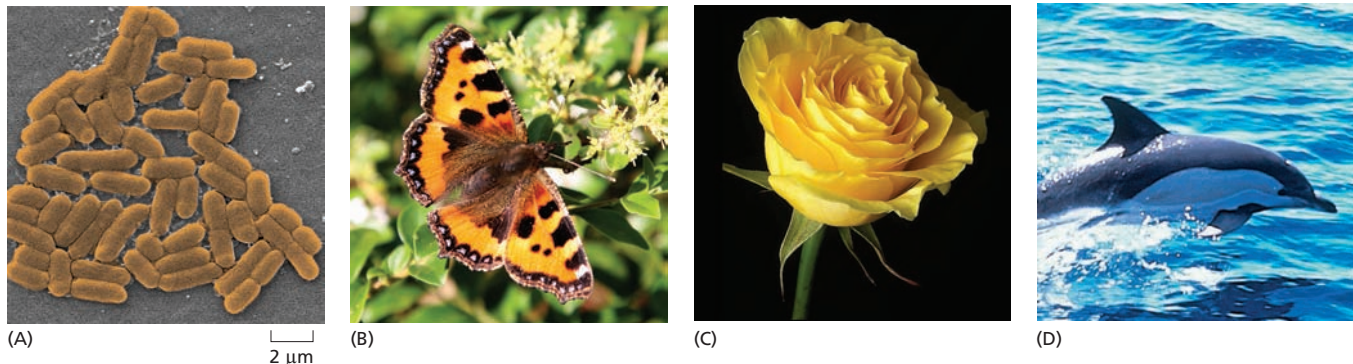


Figure 1–3 All living organisms are constructed from cells. (A) A colony of bacteria, (B) a butterfly, (C) a rose, and (D) a dolphin are all made of cells that have a fundamentally similar chemistry and operate according to the same basic principles. (A, courtesy of Janice Carr; D, courtesy of Jonathan Gordon, IFAW.)

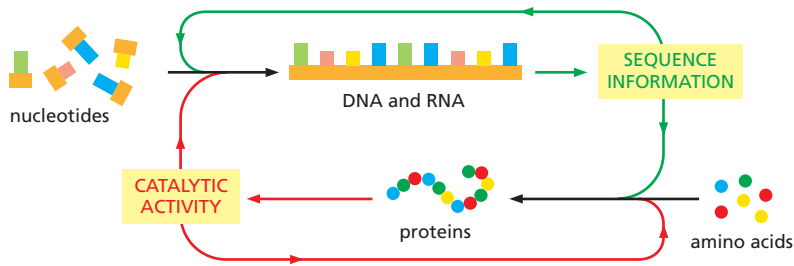


Figure 1–4 Life is an autocatalytic process. DNA and RNA provide the sequence information (green arrows) that is used to produce proteins and to copy themselves. Proteins, in turn, provide the catalytic activity (red arrows) needed to synthesize DNA, RNA, and themselves. Together, these feedback loops create the self-replicating system that endows living cells with their ability to reproduce.

nutrients and use the products to both make the building blocks needed to produce polynucleotides, proteins, and other cell constituents and to generate the energy needed to power these biosynthetic processes. We discuss these vital metabolic reactions in detail in Chapters 3 and 13.

Only living cells can perform these astonishing feats of self-replication. Viruses also contain information in the form of DNA or RNA, but they do not have the ability to reproduce by their own efforts. Instead, they parasitize the reproductive machinery of the cells that they invade to make copies of themselves. Thus, viruses are not truly considered living. They are merely chemical zombies: inert and inactive outside their host cells but able to exert a malign control once they gain entry. We review the life cycle of viruses in Chapter 9.

All Living Cells Have Apparently Evolved from the Same Ancestral Cell

When a cell replicates its DNA in preparation for cell division, the copying is not always perfect. On occasion, the instructions are corrupted by *mutations* that change the sequence of nucleotides in the DNA. For this reason, daughter cells are not necessarily exact replicas of their parent.

Mutations can create offspring that are changed for the worse (in that they are less able to survive and reproduce), changed for the better (in that they are better able to survive and reproduce), or changed in a neutral way (in that they are genetically different but equally viable). The struggle for survival eliminates the first, favors the second, and tolerates the third. The genes of the next generation will be the genes of the survivors.

For many organisms, the pattern of heredity may be complicated by sexual reproduction, in which two cells of the same species fuse, pooling their DNA. The genetic cards are then shuffled, re-dealt, and distributed in new combinations to the next generation, to be tested again for their ability to promote survival and reproduction.

These simple principles of genetic change and selection, applied repeatedly over billions of cell generations, are the basis of **evolution**—the process by which living species become gradually modified and adapted to their environment in more and more sophisticated ways. Evolution offers a startling but compelling explanation of why present-day cells are so similar in their fundamentals: they have all inherited their genetic instructions from the same common ancestral cell. It is estimated that this cell existed between 3.5 and 3.8 billion years ago, and we must suppose that it contained a prototype of the universal machinery of all life on Earth today. Through a very long process of mutation and natural selection, the descendants of this ancestral cell have gradually diverged to fill every habitat on Earth with organisms that exploit the potential of the machinery in a seemingly endless variety of ways.

QUESTION 1–2

Mutations are mistakes in the DNA that change the genetic plan from that of the previous generation. Imagine a shoe factory. Would you expect mistakes (i.e., unintentional changes) in copying the shoe design to lead to improvements in the shoes produced? Explain your answer.

Genes Provide Instructions for the Form, Function, and Behavior of Cells and Organisms

A cell's **genome**—that is, the entire sequence of nucleotides in an organism's DNA—provides a genetic program that instructs a cell how to behave. For the cells of plant and animal embryos, the genome directs the growth and development of an adult organism with hundreds of different cell types. Within an individual plant or animal, these cells can be extraordinarily varied, as we discuss in detail in Chapter 20. Fat cells, skin cells, bone cells, and nerve cells seem as dissimilar as any cells could be. Yet all these *differentiated cell types* are generated during embryonic development from a single fertilized egg cell, and they contain identical copies of the DNA of the species. Their varied characters stem from the way that individual cells use their genetic instructions. Different cells *express* different genes: that is, they use their genes to produce some RNAs and proteins and not others, depending on their internal state and on cues that they and their ancestor cells have received from their surroundings—mainly signals from other cells in the organism.

The DNA, therefore, is not just a shopping list specifying the molecules that every cell must make, and a cell is not just an assembly of all the items on the list. Each cell is capable of carrying out a variety of biological tasks, depending on its environment and its history, and it selectively uses the information encoded in its DNA to guide its activities. Later in this book, we will see in detail how DNA defines both the parts list of the cell and the rules that decide when and where these parts are to be made.

CELLS UNDER THE MICROSCOPE

Today, we have access to many powerful technologies for deciphering the principles that govern the structure and activity of the cell. But cell biology started without these modern tools. The earliest cell biologists began by simply looking at tissues and cells, and later breaking them open or slicing them up, attempting to view their contents. What they saw was to them profoundly baffling—a collection of tiny objects whose relationship to the properties of living matter seemed an impenetrable mystery. Nevertheless, this type of visual investigation was the first step toward understanding tissues and cells, and it remains essential today in the study of cell biology.

Cells were not made visible until the seventeenth century, when the **microscope** was invented. For hundreds of years afterward, all that was known about cells was discovered using this instrument. *Light microscopes* use visible light to illuminate specimens, and they allowed biologists to see for the first time the intricate structure that underpins all living things.

Although these instruments now incorporate many sophisticated improvements, the properties of light—specifically its wavelength—limit the fineness of detail these microscopes reveal. *Electron microscopes*, invented in the 1930s, go beyond this limit by using beams of electrons instead of beams of light as the source of illumination; because electrons have a much shorter wavelength, these instruments greatly extend our ability to see the fine details of cells and even render some of the larger molecules visible individually.

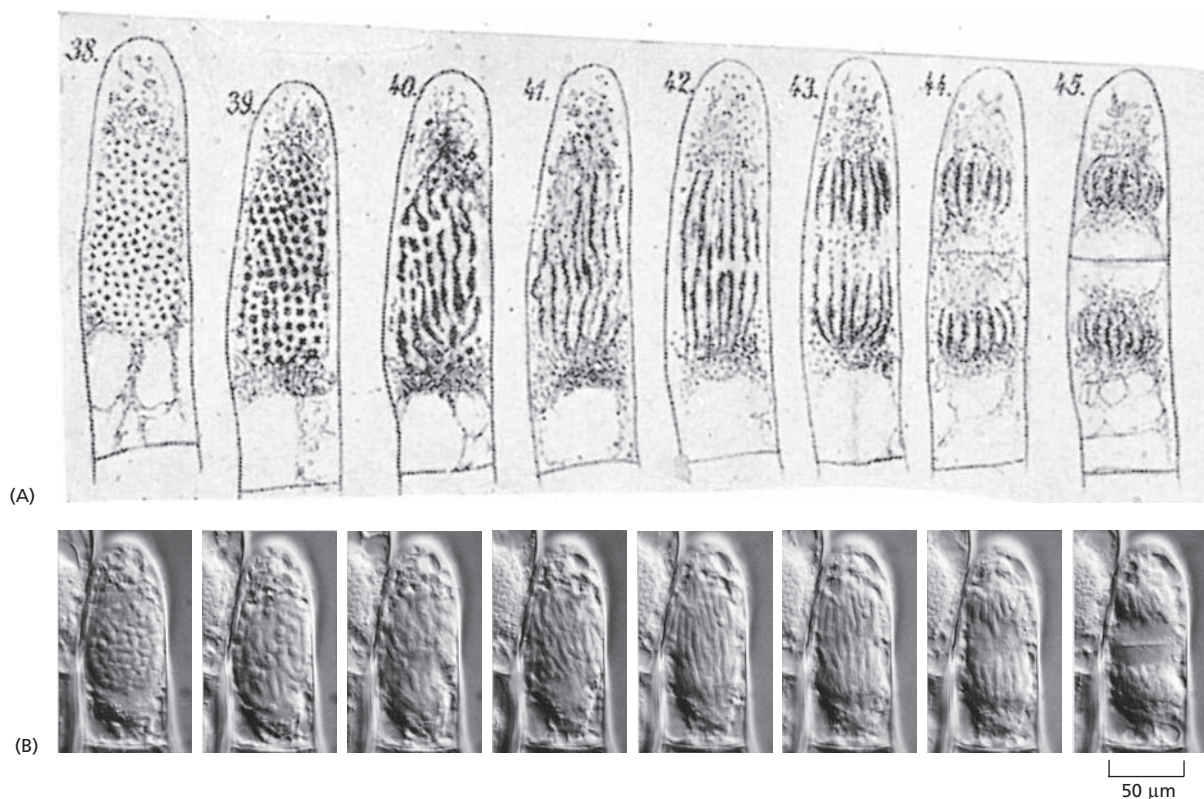
In this section, we describe various forms of light and electron microscopy. These vital tools in the modern cell biology laboratory continue to improve, revealing new and sometimes surprising details about how cells are built and how they operate.

The Invention of the Light Microscope Led to the Discovery of Cells

By the seventeenth century, glass lenses were powerful enough to permit the detection of structures invisible to the naked eye. Using an instrument equipped with such a lens, Robert Hooke examined a piece of cork and in 1665 reported to the Royal Society of London that the cork was composed of a mass of minute chambers. He called these chambers “cells,” based on their resemblance to the simple rooms occupied by monks in a monastery. The name stuck, even though the structures Hooke described were actually the cell walls that remained after the plant cells living inside them had died. Later, Hooke and his Dutch contemporary Antoni van Leeuwenhoek were able to observe living cells, seeing for the first time a world teeming with motile microscopic organisms.

For almost 200 years, such instruments—the first light microscopes—remained exotic devices, available only to a few wealthy individuals. It was not until the nineteenth century that microscopes began to be widely used to look at cells. The emergence of cell biology as a distinct science was a gradual process to which many individuals contributed, but its official birth is generally said to have been signaled by two publications: one by the botanist Matthias Schleiden in 1838 and the other by the zoologist Theodor Schwann in 1839. In these papers, Schleiden and Schwann documented the results of a systematic investigation of plant and animal tissues with the light microscope, showing that cells were the universal building blocks of all living tissues. Their work, and that of other nineteenth-century microscopists, slowly led to the realization that all living cells are formed by the growth and division of existing cells—a principle sometimes referred to as the *cell theory* (Figure 1–5). The implication that living organisms do not arise spontaneously but can be generated only from existing organisms was hotly contested, but it was finally confirmed

Figure 1–5 New cells form by growth and division of existing cells. (A) In 1880, Eduard Strasburger drew a living plant cell (a hair cell from a *Tradescantia* flower), which he observed dividing in two over a period of 2.5 hours. Inside the cell, DNA (black) can be seen condensing into chromosomes, which are then segregated into the two daughter cells. (B) A comparable living plant cell photographed through a modern light microscope. (B, from P.K. Hepler, *J. Cell Biol.* 100:1363–1368, 1985. With permission from Rockefeller University Press.)



QUESTION 1–3

You have embarked on an ambitious research project: to create life in a test tube. You boil up a rich mixture of yeast extract and amino acids in a flask, along with a sprinkling of the inorganic salts known to be essential for life. You seal the flask and allow it to cool. After several months, the liquid is as clear as ever, and there are no signs of life. A friend suggests that excluding the air was a mistake, since most life as we know it requires oxygen. You repeat the experiment, but this time you leave the flask open to the atmosphere. To your great delight, the liquid becomes cloudy after a few days, and, under the microscope, you see beautiful small cells that are clearly growing and dividing. Does this experiment prove that you managed to generate a novel life-form? How might you redesign your experiment to allow air into the flask, yet eliminate the possibility that contamination by airborne microorganisms is the explanation for the results? (For a ready-made answer, look up the classic experiments of Louis Pasteur.)

in the 1860s by an elegant set of experiments performed by Louis Pasteur (see Question 1–3).

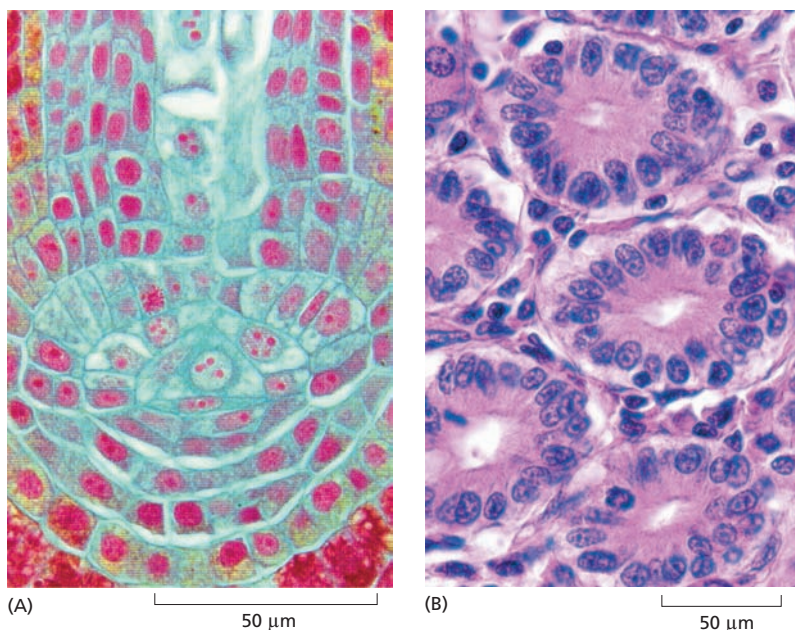
The principle that cells are generated only from preexisting cells and inherit their characteristics from them underlies all of biology and gives the subject a unique flavor: in biology, questions about the present are inescapably linked to conditions in the past. To understand why present-day cells and organisms behave as they do, we need to understand their history, all the way back to the misty origins of the first cells on Earth. Charles Darwin provided the key insight that makes this history comprehensible. His theory of evolution, published in 1859, explains how random variation and natural selection gave rise to diversity among organisms that share a common ancestry. When combined with the cell theory, the theory of evolution leads us to view all life, from its beginnings to the present day, as one vast family tree of individual cells. Although this book is primarily about how cells work today, we will encounter the theme of evolution again and again.

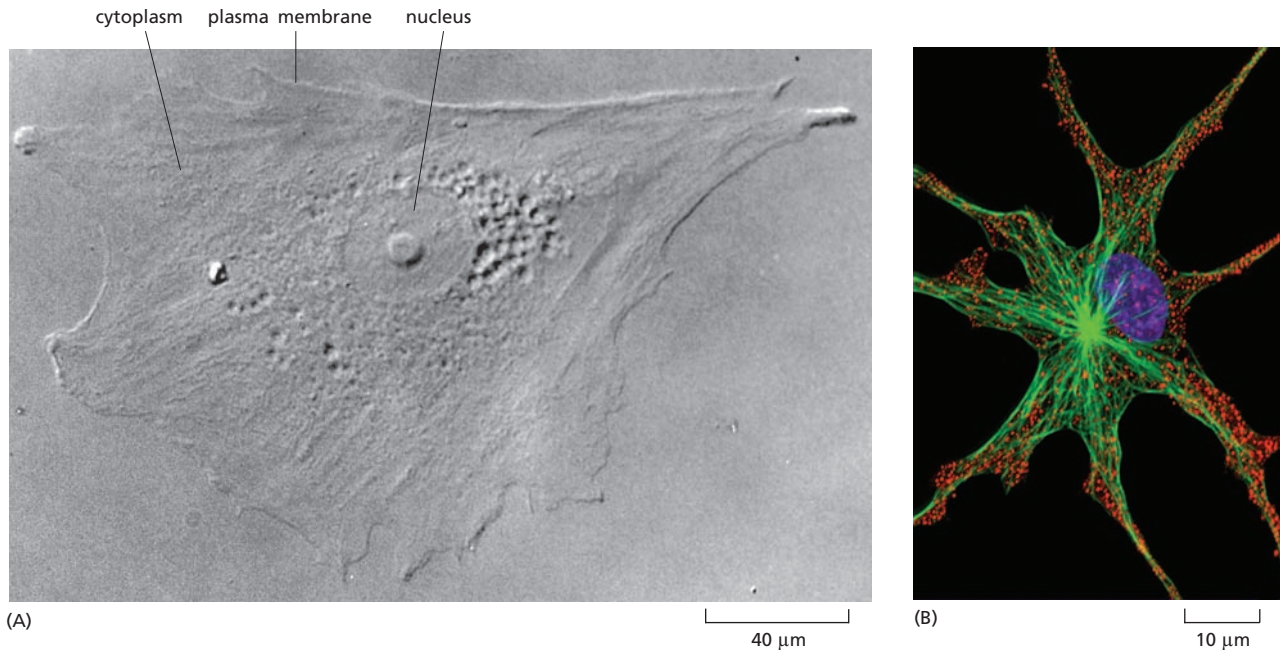
Light Microscopes Reveal Some of a Cell's Components

If a very thin slice is cut from a suitable plant or animal tissue and viewed using a light microscope, it is immediately apparent that the tissue is divided into thousands of small cells. In some cases, the cells are closely packed; in others, they are separated from one another by an *extracellular matrix*—a dense material often made of protein fibers embedded in a gel of long sugar chains. Each cell is typically about 5–20 μm in diameter. If care has been taken to keep the specimen alive, particles will be seen moving around inside its individual cells. On occasion, a cell may even be seen slowly changing shape and dividing into two (see Figure 1–5 and [Movie 1.1](#)).

Distinguishing the internal structure of a cell is difficult, not only because the parts are small, but also because they are transparent and mostly colorless. One way around the problem is to stain cells with dyes that color particular components differently ([Figure 1–6](#)). Alternatively, one can exploit the fact that cell components differ slightly from one another in refractive index, just as glass differs in refractive index from water, causing light rays to be deflected as they pass from the one medium into

Figure 1–6 Cells form tissues in plants and animals. (A) Cells in the root tip of a fern. The DNA-containing nuclei are stained red, and each cell is surrounded by a thin cell wall (light blue). The red nuclei of densely packed cells are seen at the bottom corners of the preparation. (B) Cells in the crypts of the small intestine. Each crypt appears in this cross section as a ring of closely packed cells (with nuclei stained blue). The ring is surrounded by extracellular matrix, which contains the scattered cells that produced most of the matrix components. (A, courtesy of James Mauseth; B, Jose Luis Calvo/Shutterstock.)





the other. The small differences in refractive index can be made visible by specialized optical techniques, and the resulting images can be enhanced further by electronic processing (Figure 1-7A).

As shown in Figures 1-6B and 1-7A, typical animal cells visualized in these ways have a distinct anatomy. They have a sharply defined boundary, indicating the presence of an enclosing membrane, the **plasma membrane**. A large, round structure, the *nucleus*, is prominent near the middle of the cell. Around the nucleus and filling the cell's interior is the **cytoplasm**, a transparent substance crammed with what seems at first to be a jumble of miscellaneous objects. With a good light microscope, one can begin to distinguish and classify some of the specific components in the cytoplasm, but structures smaller than about 0.2 μm—about half the wavelength of visible light—cannot normally be resolved; points closer than this are not distinguishable and appear as a single blur.

In recent years, however, new types of light microscope called **fluorescence microscopes** have been developed that use sophisticated methods of illumination and electronic image processing to see fluorescently labeled cell components in much finer detail (Figure 1-7B). The most recent super-resolution fluorescence microscopes, for example, can push the limits of resolution down even further, to about 20 nanometers (nm). That is the size of a single **ribosome**, a large macromolecular complex in which RNAs are translated into proteins. These super-resolution techniques are described further in Panel 1-1 (pp. 12–13).

The Fine Structure of a Cell Is Revealed by Electron Microscopy

For the highest magnification and best resolution, one must turn to an **electron microscope**, which can reveal details down to a few nanometers. Preparing cell samples for the electron microscope is a painstaking process. Even for light microscopy, a tissue often has to be *fixed* (that is, preserved by pickling in a reactive chemical solution), supported by *embedding* in a solid wax or resin, cut, or *sectioned*, into thin slices, and *stained* before it is viewed. (The tissues in Figure 1-6 were prepared in

Figure 1-7 Some of the internal structures of a cell can be seen with a light microscope. (A) A cell taken from human skin and grown in culture was photographed through a light microscope using interference-contrast optics (described in Panel 1-1, pp. 12–13). The nucleus is especially prominent, as is the small, round nucleolus within it (discussed in Chapter 5 and see Panel 1-2, p. 25). (B) A pigment cell from a frog, stained with fluorescent dyes and viewed with a confocal fluorescence microscope (discussed in Panel 1-1). The nucleus is shown in *purple*, the pigment granules in *red*, and the microtubules—a class of protein filaments in the cytoplasm—in *green*. (A, courtesy of Casey Cunningham; B, courtesy of Stephen Rogers and the Imaging Technology Group of the Beckman Institute, University of Illinois, Urbana.)